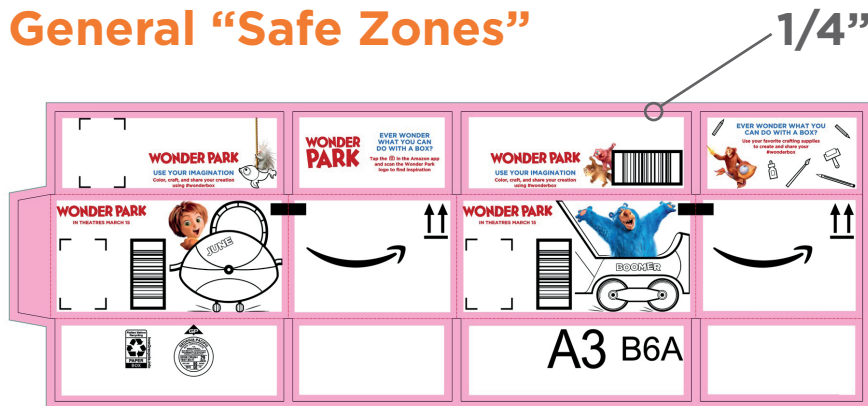


DESIGN CONSIDERATIONS FOR CONVERTING



In order for finished products to match design intent as closely as possible, there are some prepress considerations and adjustments that are required to aid in the converting process. These considerations vary based on the type of converting equipment that will be used.

General “Safe Zones”



In general, there should be no critical text, images, or logos placed in the safe zones shown above. There should be at least 1/4” of safe space on all edges.



“Safe Zones” for Designing with Converting in mind

Requirements for Specific Scenarios/ Equipment

- Flexo Folder Gluer
- Flatbed Die Cut
- Rotary Die Cut

Knife to Knife “Safe Zones”

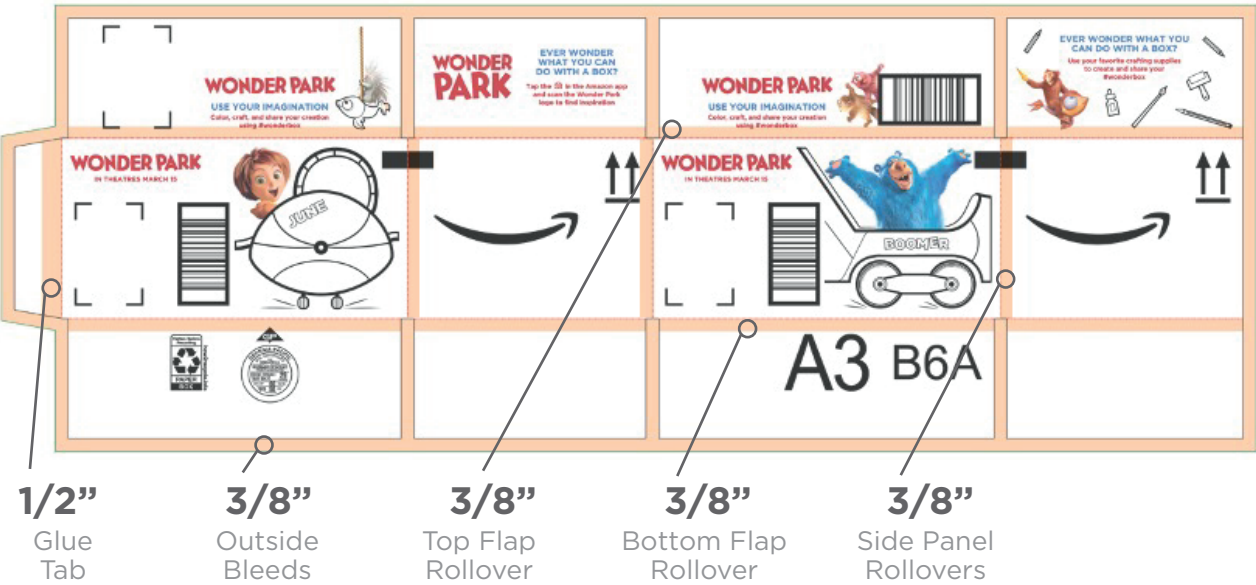


The areas shown above should be clear of patterns, images or text. The bottom and top flaps will be positioned next to each other on a production layout and split with a knife. These areas should be designed as a solid color (the same in both areas) or clear of print.

Bleed / Rollover Requirements



Flexo Folder Gluer



Flatbed Die Cut



Rotary Die Cut

